

MATERIAL:

The following Materials are needed to comply with this bulletin:

AAI SUPPLIED MATERIALS	
RAPPELLING FIXTURE UPGRADE KIT P/N TB-09001-001	
Consists of:	
2	407-148-121 Decal
1	Installation Instructions, report AA-96201
1	Instructions for Continued Airworthiness, report AA-97042
CUSTOMER SUPPLIED CONSUMABLE MATERIALS	
Qty	Description
AR	Scotch-Brite Pad
AR	Isopropyl Alcohol
AR	Epoxy Polyamide Primer

SPECIAL TOOLS REQUIRED: None

WEIGHT AND BALANCE: Not affected

PUBLICATIONS AFFECTED:

Installation Instructions, Report Number AA-96201

ADDITIONAL INFORMATION:

Any questions regarding this bulletin should be addressed to:

AERONAUTICAL ACCESSORIES, INC.

P.O. Box 3689

Bristol, 37625-3689 TN

PRODUCT SUPPORT

1-800-251-7094

techsupport@aero-access.com

CUSTOMER SUPPORT / SALES

1-800-251-7094

sales@aero-access.com

ACCOMPLISHMENT INSTRUCTIONS

1. Upon receipt of this bulletin, determine by part number if affected Rappelling Fixture is installed.
2. If affected Rappelling Fixture is installed, contact AAI Customer Support / Sales for Rappelling Fixture Upgrade Kit P/N TB-09001-001, consisting of:
 - a. Decal P/N 407-148-121 (quantity, 2)
 - b. Installation Instructions, report AA-96201, Rev F, or later approved revision
 - c. Instructions for Continued Airworthiness, report AA-97042, Rev C, or later approved revision.
3. Upon receipt of materials, lightly polish the Rappelling Fixture decal area (see Figure 1) using Scotch-Brite pad. Take care to remove as little of the component protective coating as possible.
4. After polishing, clean the area with isopropyl alcohol, brush Alodine bare aluminum areas per MIL-DTL-5541 or equivalent, and reprime with Epoxy Polyamide primer per MIL-PRF-23377 or equivalent, as required.
5. Inspect Rappelling Fixture for damage in accordance with limits shown in ICA, report AA-97042, Table 1 (Damage and Repair Limits). Repair/replace Rappelling Fixture as required.
6. Paint repaired area to match existing finish, as required.
7. Apply decal (Figure 1) to Rappelling Fixture and aircraft interior structure/trim.
8. Note acceptable Rappelling Fixture load attachment as shown in Figure 2
9. Annotate records to indicate accomplishment of this bulletin.
10. Return aircraft to service.

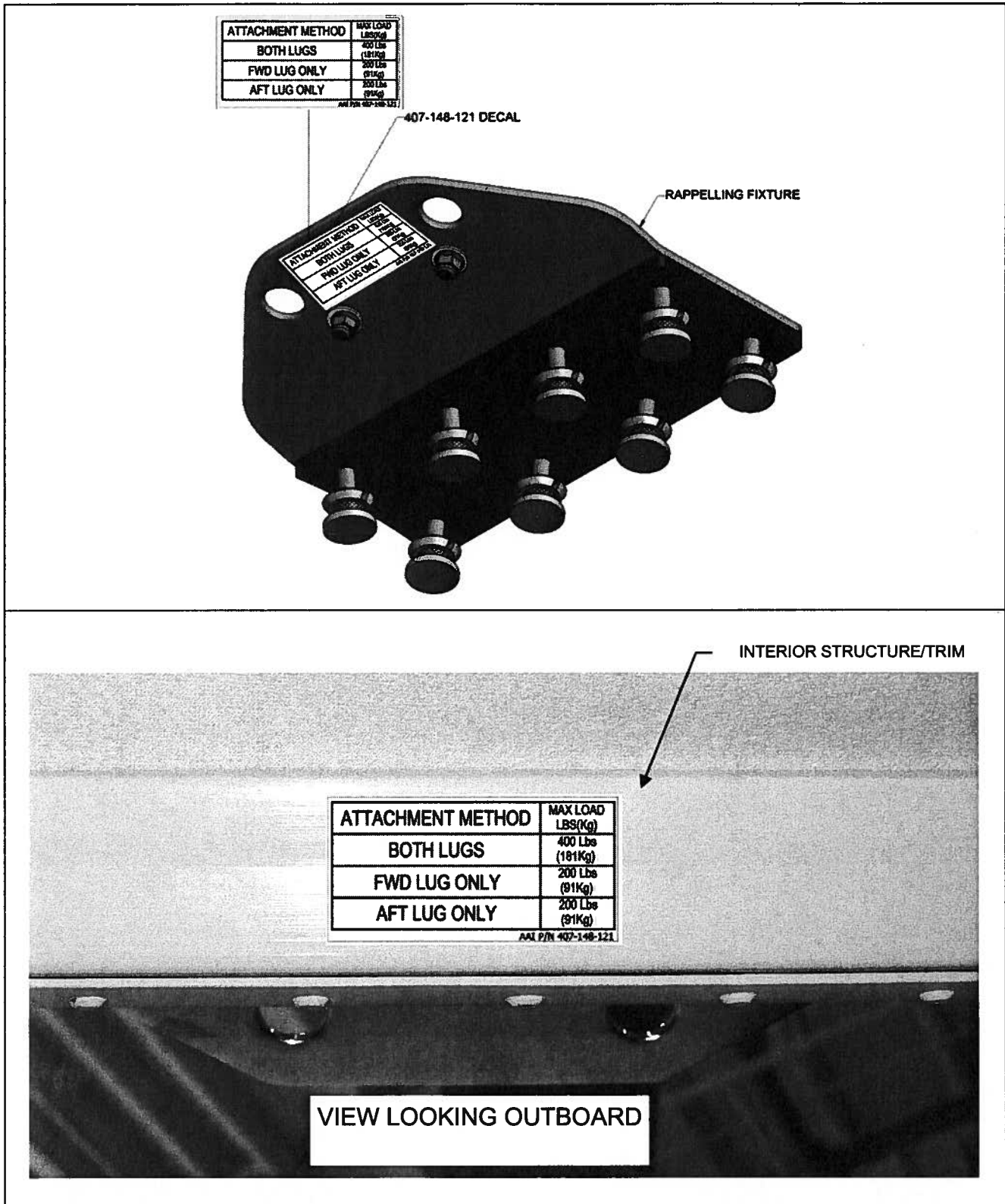


FIGURE 1. 407-148-121 DECAL MOUNTING LOCATIONS

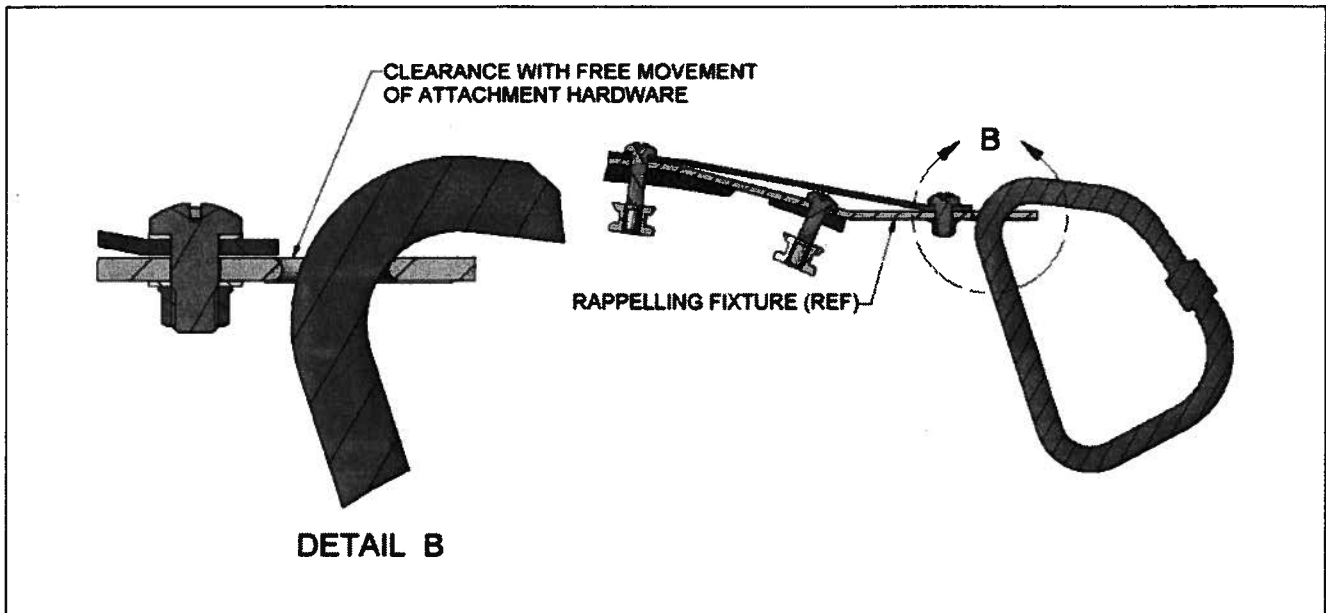


FIGURE 2. ACCEPTABLE RAPPELLING FIXTURE LOAD ATTACHMENT