



ACCESSORIES FOR **BELL 505 JET RANGER X**

Innovation. Reliability. Performance.

The Aeronautical Accessories brand catalog continues to expand the offerings for the Bell 505 Jet Ranger X featuring new, innovative parts and accessories. These include crew sliding windows, an avionics shelf, automatic door openers, floor protectors, full-length skid shoes, headliners, and much more. Each product is uniquely capable of improving and enhancing your mission.

The Aeronautical Accessories brand offers numerous advantages, including:

Global distribution

Ability to develop new custom offerings that meet specific customer requirements

Proven high levels of customer satisfaction

Superior parts and accessories backed by Bell's ISO 9001 with AS9100 Revision D certification

Exacting FAA requirements and our own high-quality standards met by every component

Ready availability for quick, responsive shipments

Minimum downtime for repair, refurbishment, and completions

Ordering Is Simple



24/7 Access

Visit [aero-access.com](#) for the latest offerings sold under the Aeronautical Accessories brand. The site features 24/7 access to technical information, pricing, availability, new accessories, and more.

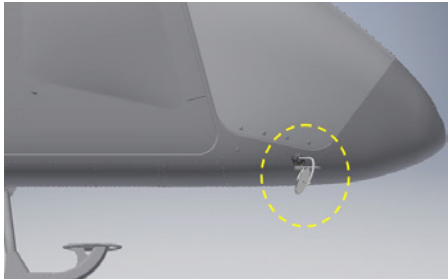
Offerings for Bell 505 Jet Ranger X

Safety & Mission	4
Cargo Mirror	
Wire Strike Protection System	
Expanded Instrument Panel	
Avionics Shelf / Expanded Avionics Shelf	
HF Antenna	
Traffic Advisory System	
Radar Altimeter Installation Kit	
FWD and AFT Hardpoints	
Emergency Locator Transmitter	
Helicopter Terrain Avoidance Warning System (HTAWS) & Synthetic Vision System (SVS)	
Second VHF Comm (Pedestal Mount) Installation Kit for GTR225B	
Glareshield (Base Ship with and without Air Conditioning)	
Tail Rotor Gearbox Cover	
Bose Headset Adapter	
Portable Track and Balance Adapter Kit	
HurleyIR Falcon Spectral II Camera Inst. Kit	
Doors & Seating	9
Automatic Door Openers (L/H and R/H)	
Cowling Access Door	
Removable Jettison Doors	
Interior & Trim	10
Floor Protectors – Crew, Passenger, Baggage	
Headliner	
Windows	11
Crew Window with Slider	
Tinted/Solar Advantage Windows	
Ground Support	12
Operator Accessory Package	
Ground Handling Carrier Bracket (Qty 2)	
Tow Bar	
Landing Gear & Steps	13
High Skid Gear	
Bear Paw	
Full-Length Trainer Skid Shoe	
Cabin/Crew Steps	
Lighting & Vision	14
Nightscanner™ HID/HID+ Lights	

Safety & Mission

CARGO MIRROR

The Bell 505 Cargo Mirror offers a ground-adjustable mirror system to view the cargo hook, load, and surrounding area during external cargo operations. The Cargo Mirror is designed to be quickly removed from the aircraft when operations do not require its use.



Patent Pending

Description	Part Number
Cargo Hook Mirror, RH Unpainted	505-175-002
Cargo Hook Mirror, LH Unpainted	505-175-003
Cargo Hook Mirror, RH Painted Black	505-175-004
Cargo Hook Mirror, LH Painted Black	505-175-005

WIRE STRIKE PROTECTION SYSTEM™ (WSPS™)

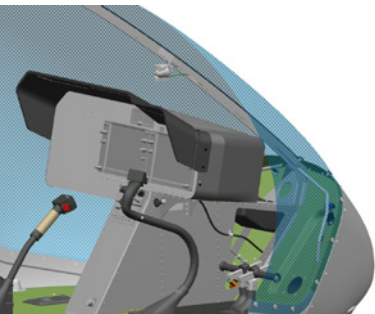
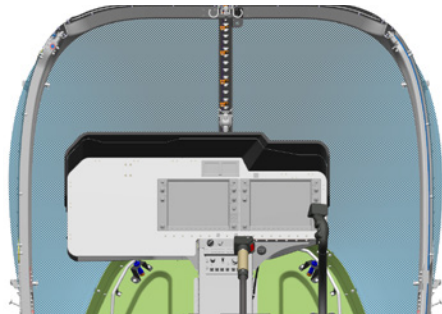
The WSPS™ Wire Strike Protection System™ provides a measure of protection for helicopters in the event of inadvertent flight into horizontally strung mechanical, electrical transmission, or communication wires or cables. The WSPS™ is designed to reduce the possibility of wires entering into the cockpit area, reduce the possibility of flight control damage during a wire strike, and decrease the possibility of wires becoming entangled in the landing gear.



Description	Part Number
Wire Strike Protection System	965-49302-001

EXPANDED INSTRUMENT PANEL

The Expanded Instrument Panel replaces standard Bell instrument panel and allows for the installation of a variety of avionics and other mission-related equipment. The Expanded Instrument Panel is sized to accommodate a third 12" display monitor. Kits can also be purchased for aircraft with and without air conditioning.



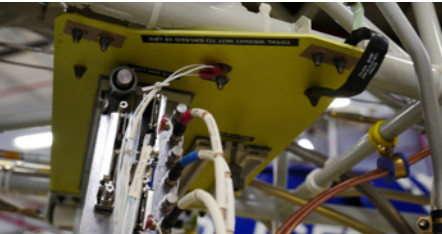
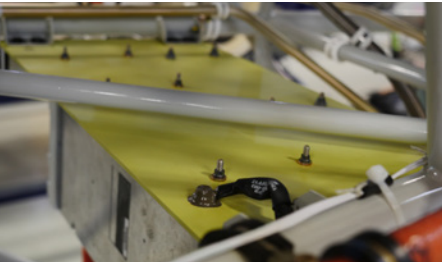
Description	Part Number
Exp. Instrument Panel (with air conditioning)	Coming Soon
Exp. Instrument Panel (without air conditioning)	Coming Soon

AVIONICS SHELF

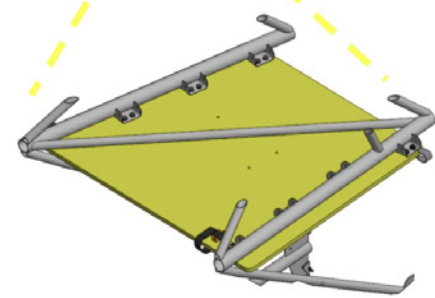
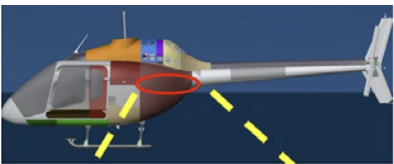
The Avionics Shelf installs in the truss area of the helicopter and provides extra space for installation of additional avionics. This shelf is required for installation of the Traffic Advisory System Kit and Radar Altimeter Kit.

The Expanded Avionics Shelf provides a larger avionics shelf with a maximum shelf capacity of 100 lbs.

Avionics Shelf



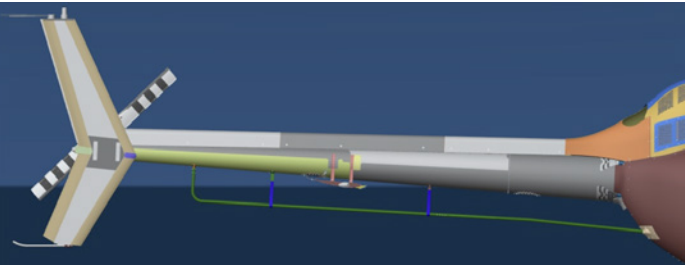
Expanded Avionics Shelf



Description	Part Number
Avionics Shelf	505-029-001
Expanded Avionics Shelf	Coming Soon

HF ANTENNA

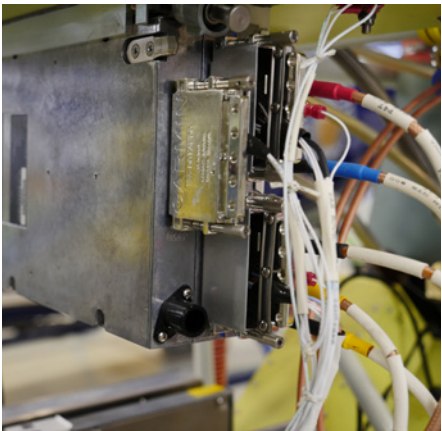
The Bell 505 HF Antenna provides an antenna solution for the Bell 505 integrated with a variety of HF communications equipment.



Description	Part Number
HF Antenna	505-027-001

TRAFFIC ADVISORY SYSTEM

System consists of Garmin GTS 800 LRU with the associated upper and lower antennas and cyclic mounted TA Mute switch. The LRU is installed on the Avionics Shelf located on the truss. The upper antenna is located on the left cowling and the lower antenna is located on the belly below the copilot. The Garmin GTS 800 provides crew with traffic advisories with traffic data displayed on the G1000 as well as aural alerts.



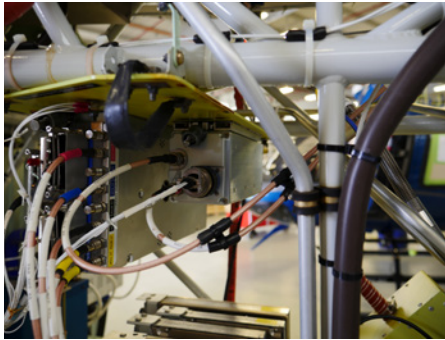
Description	Part Number
Traffic Advisory System Installation Kit	505-018-001

Requires Garmin GTS800, sold separately.

Safety & Mission Products (cont'd)

RADAR ALTIMETER INSTALLATION KIT

The Radar Altimeter Installation Kit integrates the Garmin GRA55 Radar Altimeter into the Bell 505.

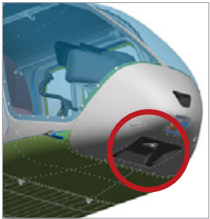
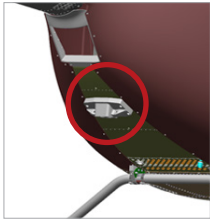
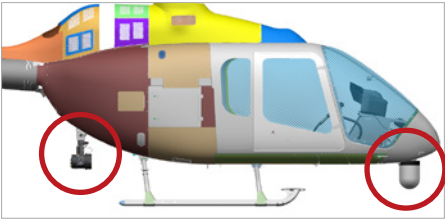


Description	Part Number
Radar Altimeter Installation Kit	505-016-001

Requires Garmin GRA55, sold separately.

FWD AND AFT HARDPOINT

The Bell 505 Forward and AFT Hardpoint kits facilitate installation of external equipment (i.e. camera or searchlight) into forward and/or aft position on the Bell 505.



Description	Part Number
FWD Hardpoint	505-102-001
AFT Hardpoint	505-104-001

EMERGENCY LOCATOR TRANSMITTER

The Bell 505 Emergency Locator Transmitter integrates the ACK 406/121.5 MHz E-04 ELT into the Bell 505.



Description	Part Number
Emergency Locator Transmitter	505-014-003



HELICOPTER TERRAIN AVOIDANCE WARNING SYSTEM (HTAWS) AND SYNTHETIC VISION SYSTEM (SVS)

Provides the Garmin unlock cards for enabling the Garmin Helicopter Terrain Avoidance Warning System and Synthetic Vision System to be displayed on the G1000. The two systems increase crew situational awareness where Garmin HTAWS provides terrain and obstacle alerts, and the SVS depicts forward-looking imagery of terrain and obstacles.



Description	Part Number
Helicopter Terrain Avoidance Warning System (HTAWS) and Synthetic Vision System (SVS)	505-031-001

SECOND VHF COMM (PEDESTAL MOUNT) INSTALLATION KIT FOR GTR225B

The Second VHF Comm Installation Kit integrates the Garmin GTR225B pedestal-mounted radio.



Description	Part Number
Second VHF Comm (pedestal mount) Installation Kit for GTR225B	505-001-001

GLARESHIELD (BASE SHIP WITH OR WITHOUT AIR CONDITIONING)

The Glareshield is a replacement for the OEM glareshield, with and without air conditioning.



Description	Part Number
Glareshield (base ship without air conditioning)	505-024-103
Glareshield (base ship with air conditioning)	505-024-105

TAIL ROTOR GEAR BOX COVER

The Tail Rotor Gear Box Cover is a composite covering that improves aesthetics and provides protection from the environment. The cover provides easy accessibility for pre-flight inspections.



Description	Part Number
Tail Rotor Gear Box Cover - Primed	505-307-001
Tail Rotor Gear Box Cover - White	505-307-002
Tail Rotor Gear Box Cover - Black Metallic	505-307-003
Tail Rotor Gear Box Cover - Blue Metallic	505-307-004
Tail Rotor Gear Box Cover - Customer Specified Color	505-307-005

Safety & Mission Products (cont'd)

BOSE® HEADSET ADAPTER

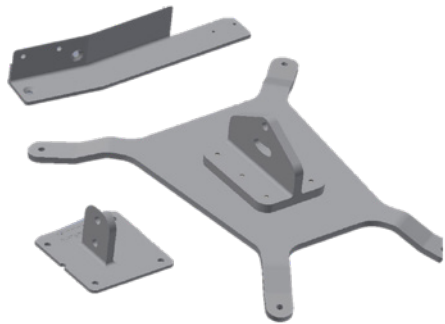
The Bose Headset Adapter Kit modifies the basic aircraft ICS system in the crew and passenger areas for use of Bose noise-canceling headsets.



Description	Part Number
Bose Headset Adapter	505-033-001

PORTABLE TRACK AND BALANCE ADAPTER KIT

The Portable Track and Balance Adapter Kit provides the necessary equipment to be used with the basic RADS-AT kit to perform main rotor and tail rotor track and balancing.



Description	Part Number
Portable Track and Balance Adapter Kit	505-099-001

HURLEYIR FALCON SPECTRAL CAMERA INSTALLATION KIT

The HurleyIR Falcon Spectral Camera Installation Kit addresses the need for aerial security and pursuit with an attractively low price point. Hybrid sensors that do not require cooling result in lower maintenance costs.

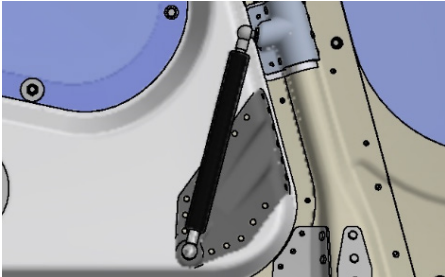


Description	Part Number
HurleyIR Falcon Spectral Camera Installation Kit	Coming Soon

Doors & Seating

AUTOMATIC DOOR OPENER

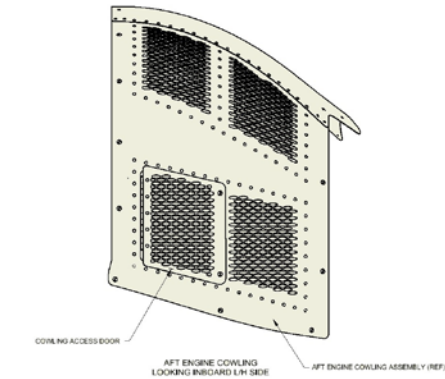
The Automatic Door Opener opens cockpit doors automatically when the door latches are released. By allowing the door to hold in an open position, door openers provide ease of entrance and exit.



Description	Part Number
Automatic Door Opener (Left-Hand)	505-510-001
Automatic Door Opener (Right-Hand)	505-510-002

COWLING ACCESS DOOR

The Cowling Access Door permits easy access to the Bell 505's Arrius 2R compressor wash fitting, allowing compressor wash activities to be accomplished without removal of the entire engine cowlings.



Description	Part Number
Cowling Access Door	505-507-001

REMOVABLE (JETTISON) CREW DOORS

The Removable Crew Doors and door pins are designed to be removed quickly and easily in the event of an emergency.

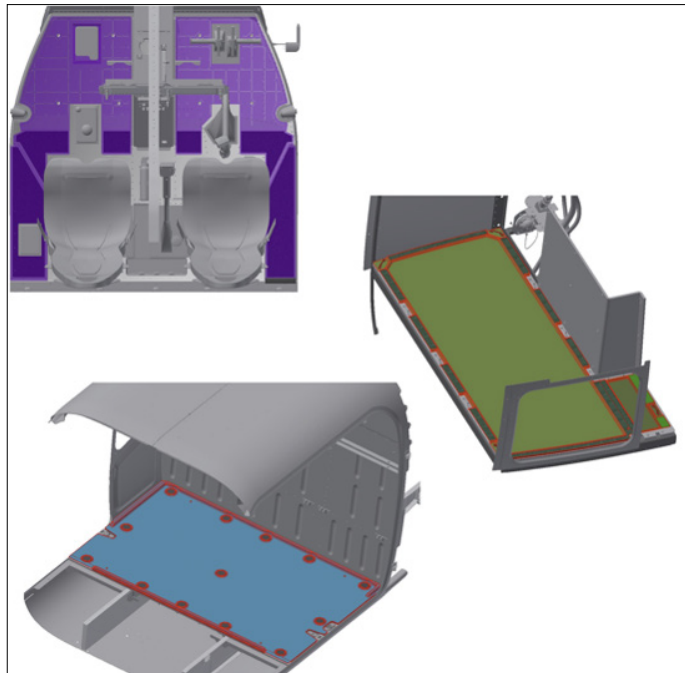
Description	Part Number
Removable (Jettison) Crew Doors	Coming Soon

Interiors & Trim

FLOOR PROTECTORS - CREW, PASSENGER, BAGGAGE COMPLETE KIT AIRCRAFT

The Crew Floor Protectors incorporate the OEM heel rest area and provide floor protection for the crew floor and entry area at the door. The Crew Floor Protector can be installed in aircraft with and without carpet. The Passenger Floor Protector provides protection to carpeted floor or to bare floor and maintains access to passenger area cargo restraints. The Passenger Floor Protector can be installed in aircraft with and without carpet.

The Baggage Floor Protector provides floor protection and access to cargo tie down footman loops.



Description	Part Number
Floor Protectors Crew, Passenger, Baggage Complete Kit Aircraft w/ Carpet	505-450-001
Floor Protectors Crew, Passenger, Baggage Complete Kit Aircraft w/o Carpet	505-450-002
Passenger Floor Protector Kit (w/ Carpet)	505-450-005
Passenger Floor Protector Kit (w/o Carpet)	505-450-006
Co-Pilot Floor Protector Kit	505-450-003
Pilot Floor Protector Kit	505-450-004
Baggage Floor Protector Kit w/Extension	505-450-007

HEADLINER

The Headliner kits provide center, left and right hand panels that improve the interior appearance of the crew and passenger areas. The headliners can be made in black or tan. The black center panel can be provided with an optional hydrographics print per customer request.



Description	Part Number
Headliner, Black	505-455-001
Headliner, Tan	505-455-003
Headliner, Black with Tan center	505-455-005
Headliner, Black with Hydrographic center	505-455-007

Windows

CREW WINDOW WITH SLIDER

The Crew Window with Slider provides a replacement crew door window with an integrated sliding window. The sliding window provides cockpit ventilation and access.



Description	Part Number
Crew Sliding Window Right-hand	505-541-002
Crew Sliding Window Left-hand	505-541-001

TINTED/SOLAR ADVANTAGE WINDOWS

Solar Advantage, Aeronautical Accessories-branded windshields and windows, utilize a new, innovative acrylic that blocks ultraviolet (UV) A and B rays, reducing infrared (heat) radiation in the cabin. By reducing heat build-up, the cabin remains more comfortable. Blocking UVA and UVB rays, Solar Advantage also reduces fading of interior fabric, weathering of components, and it extends the life of the aircraft interior plastics.

- Blocks 99.99% of UV rays
- Approximately 10% reduction in temperature



Description	Color	Part Number
Tinted/Solar Advantage Crew Window LH	Light Gray	505-542-021
Tinted/Solar Advantage Crew Window RH	Light Gray	505-542-022
Tinted/Solar Advantage Clamshell Door Window LH	Dark Gray	505-543-025
Tinted/Solar Advantage Fixed Passenger Window RH	Dark Gray	505-543-026
Tinted/Solar Advantage Clamshell Door Window LH	Light Gray	505-543-021
Tinted/Solar Advantage Fixed Passenger Window RH	Light Gray	505-543-022

Ground Support

OPERATOR ACCESSORY PACKAGE

Accessory package consisting of Pitot Tube Cover, Main Rotor Tie Down, Tail Rotor Tie Down, IBF Cover Assembly, Exhaust Cover Assembly and Bubble Cover. The Bell 505 Pitot Tube Cover protects the pitot tube from foreign object damage while parked. The Main Rotor Tie Down secures the main rotor blades while parked. The Tail Rotor Tie Down secures the tail rotor blades while parked. The Bell 505 IBF Cover Assembly is held in place by snap fittings and protects the Inlet Barrier Filter from foreign object damage while parked. Exhaust Cover Assembly protects the exhaust portion of the Bell 505 Arrius 2R from foreign object damage while parked.



Description	Part Number
Operator Accessory Package (includes 5 items below)	505-100-001
Cover, Pitot Tube	206-070-438-007
Tie Down, Main Rotor	206-070-388-001
Tie Down, Tail Rotor	206-070-469-001
IBF Cover Assembly	Coming Soon
Exhaust Cover Assembly	UAA6505-070-401

GROUND HANDLING CARRIER BRACKET (QTY 2)

The Bell 505 Ground Handling Carrier Bracket permits the use of typical manual or hydraulic ground handling wheels with the Bell 505 skid gear.



Description	Part Number
Ground Handling Carrier Bracket (Qty 2)	505-700-101

TOW BAR

Designed for one-man operation and simple to use, the tow bar can be installed in three to five minutes. Includes HT505 tow bar and hitch.



Description	Part Number
Tow Bar - Ring Hitch	505-701-001
Tow Bar - Ball Hitch	505-701-003
Tow Bar - Clevis Hitch	505-701-005
Tow Bar Assembly - Shock Ring Hitch	505-701-007

Note: 505 Tow bar is only applicable to the standard gear. The 505 High Gear will require a HT-7M Tow bar.

Landing Gear & Steps

HIGH SKID GEAR

The 505 High Skid Gear Kit provides an additional 6.5" of height versus standard gear, which provides additional ground clearance for equipment installation and landing in various terrain.



Description	Part Number
High Skid Gear	505-710-001

Note: 505-712-001 or 505-712-003 Crew/Cabin Steps are not included with High Gear and must be ordered separately. Applicable Crew/Cabin Step is determined if 505 is equipped with WSPS.

BEAR PAW

The Bear Paw provides stability and improves balancing when landing on soft terrain such as sand or snow.



Description	Part Number
Bear Paw	AAL-390-020-001

FULL-LENGTH TRAINER SKID SHOE

The Full-Length Trainer Skid Shoe is a one-piece skid shoe which provides a higher degree of protection than standard weld bead shoes. It is manufactured using patented Carbide technology, which reduces wear over standard shoes and operating costs.

The Full-Length Trainer Skid Shoe is only compatible with standard 505 skid gear. The product is not compatible with high skid gear.



Description	Part Number
Full-Length Trainer Skid Shoe	505-707-001

Landing Gear & Steps (cont'd)

CABIN/CREW STEPS

Step to assist with entry and exit to cabin. Crew Step approved for installation on both OEM Skid Gear and High Skid Gear.



Description	Part Number
Crew Step for use with Standard or High Skid Gear (Not compatible with WSPS installed)	505-712-001
Crew Step for use with Standard or High Skid Gear with Wire Strike Protection System (WSPS)	505-712-003

Note: 505-712-001 or 505-712-003 Crew/Cabin Steps can be installed with 505 Standard Gear or High Gear 505-710-001.

Lighting & Vision

NIGHTSCANNER™ HID/HID+ LIGHT

The Nightscanner is a steerable landing light system that has 360-degree rotation and can be automatically stowed in its housing from any position. The Nightscanner searchlight/landing lights feature low cost and low power requirements (as little as 4 Amps). HID features 500K candlepower, while HID+ offers 700K candlepower.



Description	Part Number
Nightscanner™ HID Light	505-806-001
Nightscanner™ HID+ Light	505-806-002



aero-access.com/bell-505 | 1.800.251.7094 | sales@aero-access.com | techsupport@aero-access.com

Aeronautical Accessories is a Bell Helicopter brand. All registered trademarks are the property of their respective owners. The information herein is general in nature and may vary with conditions. Individuals using this information must exercise their independent judgment in evaluating product selection and determining product appropriateness for their particular purpose and requirements. For performance data and operating limitations for any specific mission, reference must be made to all approved manuals. Bell Helicopter Textron Inc. makes no representations or warranties, either expressed or implied, including without limitation any warranties of merchantability or fitness for a particular purpose with respect to the information set forth herein or the product(s) and service(s) to which the information refers. Accordingly, Bell Helicopter Textron Inc. will not be responsible for damages (of any kind or nature, including incidental, direct, indirect, or consequential damages) resulting from the use of or reliance on this information. Bell Helicopter Textron Inc. reserves the right to change product designs and specifications without notice. © 2019 Bell Helicopter Textron Inc.