



OFFERINGS FOR **AIRBUS HELICOPTER MODELS**

Innovation. Reliability. Performance.

The Aeronautical Accessories brand catalog offerings for Airbus helicopters feature innovative products, parts and accessories. The following offerings are available under the Aeronautical Accessories brand:

Global distribution

Ability to develop new custom offerings that meet a new specific customer requirement

High levels of customer service satisfaction and brand loyalty (verified by research)

Superior parts and accessories backed by Bell Helicopter's ISO 9001
with AS9100 Revision C certification

Every component meets exacting FAA requirements and our own high-quality standards

Ready availability ensures quick, responsive shipments

Minimum downtime for repair, refurbishment, and completions

Ordering is Simple



Search

Search aero-access.com using the parts finder tool to search by make, model and product category.



Order

Call, email, order online (new) or request a quote (RFQ) online.

RFQ responses are sent via email.



Ship

Orders are shipped to anywhere in the world.

Confirmation of shipment is sent via email.



Fly

World-class customer service helps enable time in the air.

24/7 Access

Visit aero-access.com for the latest offerings sold under the Aeronautical Accessories brand. The site features 24/7 access to technical information, pricing, availability, new accessories and more.

Offerings for Airbus Helicopter Models

AS350/H125	AS350 /H125	AS355	AS355E	BK-117	BO-105	EC120/H120	EC130/H130	EC135/H135	EC145/H145	EC225/H225	SA318C, SA341G
	B1, B2, B3, BA, D										

Windows

4

Replacement Windows	x		x		x	x	x	x			
---------------------	---	--	---	--	---	---	---	---	--	--	--

Interiors & Trim

6

Cabin Floor Protector Kit						x					
Interior Trim Replacements	x		x								

Landing Gear & Accessories

7

Carbide Skid Shoes	x		x		x	x	x	x	x		
Flitestep Kit	x		x								
Cargo Baskets & Steps	x		x								
Bike Racks	x		x								x
Skis	x	x		x							x

Safety & Mission

9

Carrousel Multi-Hook External Load System	All Airbus Models										
Self-Latching Cargo Hook	All Airbus Models										
Wire Strike Protection System (WSPS)	x		x		x						
Avionics Console/Assembly Kit	x										
Passenger Shoulder Harness Kits	x		x				x	x		x	

Lighting & Vision

11

Nightscanner™ Lighting	x					x					
HID Nightscanner	x					x					
HID Nightscanner Plus	x					x					
LED Super Nightscanner	Most Airbus models (Additional approvals may be required for some models)										
Hurley IR Camera	All Airbus Models										

Door Accessories

12

Automatic Door Openers	x	x		x			x				
------------------------	---	---	--	---	--	--	---	--	--	--	--

Ground Support

13

Towbars	x	x	x		x						
Ground Handling Wheels	x	x	x		x		x			x	
Rolin Windshield Buddy Protectors	x		x		x						

Fuel & Filters

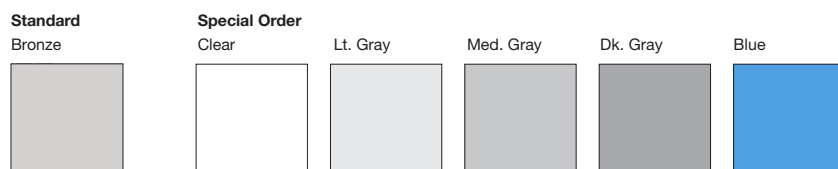
15

Fuel Cap Lanyard Kit	x										
Inlet Barrier Filters	x		x				x				

Window Offerings

Recognizing that affordability, ease of installation, on-time delivery, and a wide selection are important, we have a proven track record of providing window offerings to Airbus helicopter owners and operators. Top-grade acrylics and attention to detail mean Aeronautical Accessories brand windows improve safety and performance.

Replacement windows for Airbus Helicopter models are available in bronze. Additional colors are available as a special order.



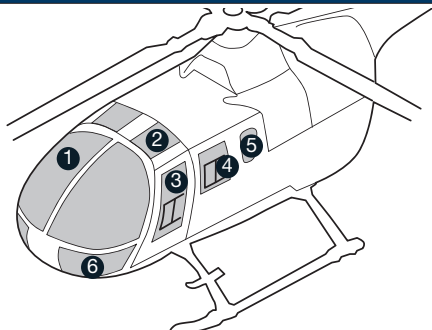
Replacement Windows – AS350/H125, AS355

Description		Clear	Lt. Gray	Med. Gray	Dk. Gray
1	Skylight	x	x		x
	Windshield, 2-Piece, Formed	x	x		
	Windshield, Formed	x	x		
2	Cover Strip				
	Crew Window	x	x		
	Crew Window w/Slider	x	x		
3	Replacement Slider Crew	x	x		
	Passenger Window Bulged	x	x		
	Passenger Window	x	x		
4	Window Lower Large	x		x	
	Crew Window Lower	x	x		
	Wedge Window 7 Place	x	x		
5	Crew Window (Reduced)	x	x		
	Crew Window w/Slider (Reduced)	x	x		
	Crew Window Lower	x	x		
6	Passenger Window (Sliding Door)	x	x		x

Replacement Windows – BK-117

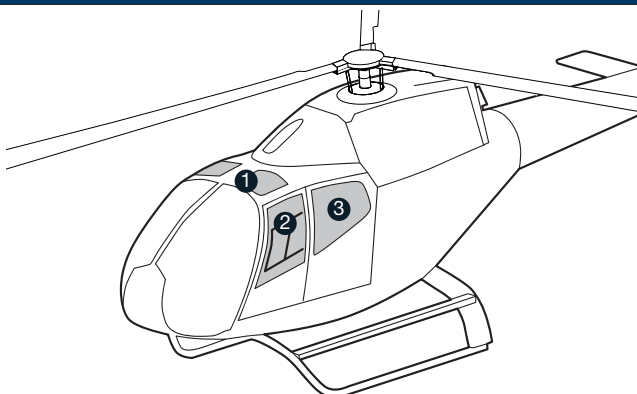
Description		Clear	Dk. Gray
1	Skylight	x	x
2	Windshield	x	
3	Fuselage Window	x	

Replacement Windows – BO-105



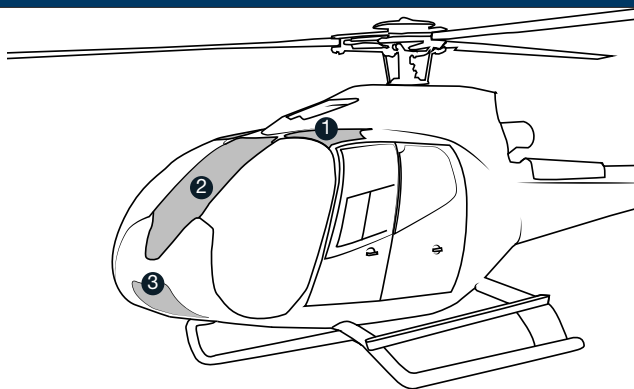
	Description	Clear	Blue
1	Windshield	x	
2	Skylight	x	x
3	Crew Window w/Snap Vents	x	
	Crew Window w/Mid Slider	x	
	Replacement Slider Crew	x	
4	Passenger Window w/Slider	x	
	Replacement Slider Passenger	x	
5	Cabin Window Aft	x	
6	Chin Bubble	x	

Replacement Windows – EC120/H120



	Description	Clear	Bronze
1	Skylight	x	
2	Small Cabin Door Window	x	x
	Cabin Door Window	x	
3	Sliding Door Window	x	
	Fixed Panel Window	x	

Replacement Windows – EC130/H130



	Description	Clear	Gray
1	Skylight		x
2	Center Upper Windshield	x	
3	Center Lower Windshield	x	

Interior & Trim Offerings

Aeronautical Accessories brand interiors and trim offerings are the largest variety available to the aftermarket. Our brand of interiors and trim offer outstanding quality and fit in a wide color selection. Replacement interiors are designed for easy installation. Piece after piece – form, fit and function – the Aeronautical Accessories brand delivers superior replacement interiors and trim for several Airbus helicopter models.

Beige



Gray



Replacement interiors for Airbus Helicopter models in beige and gray. (Additional interior colors are available as a special order.)



Cabin Floor Protectors – EC120/H120



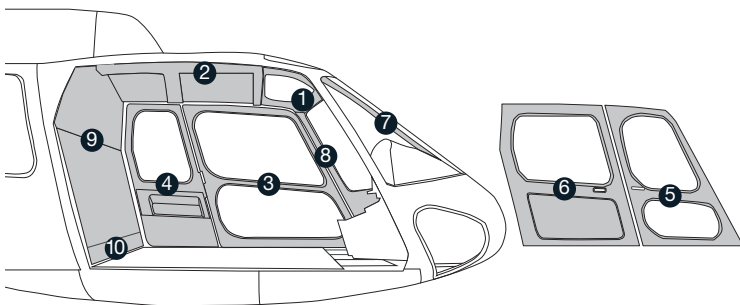
Cabin floor protectors provide low-cost, lightweight protection for carpeted or noncarpeted cabin floors. They are easy to remove for cleaning.

Crew (Pilot and Copilot)

Passenger

Trim Replacement Components, Interior – AS350/H125, AS355

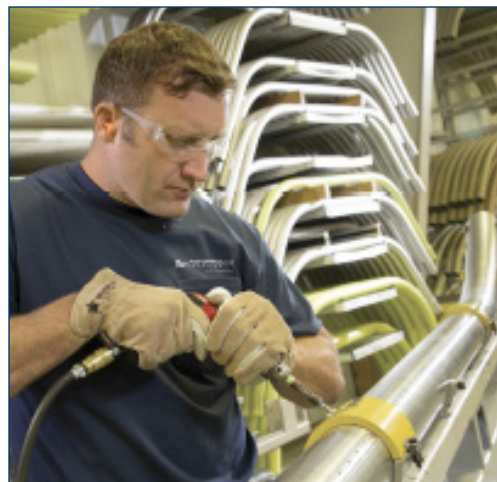
Fiberglass reinforcements are added to critical areas of trim replacement components for greater durability.



	Description	Beige	Gray
1	Overhead Panel Front	x	x
2	Overhead Panel Rear	x	x
3	Lower Panel w/ Visibility	x	
	Lower Panel w/o Visibility	x	x
	Upper Panel	x	x
	Door Panel w/ or w/o Visibility	x	x
4	Lower or Upper Subdoor Panel	x	x
	Subdoor Panel	x	x
5	Lower Reduced Door Panel w/Visibility	x	
	Lower Reduced Door Panel	x	x
	Upper Reduced Door Panel	x	
	Reduced Door Panel	x	x
6	Lower or Upper Sliding Door Panel	x	
	Sliding Door Panel	x	x
7	Canopy Post Center	x	x
8	Canopy Post	x	x
9	Rear Bulkhead Upper	x	x
10	Rear Bulkhead Lower	x	x

Landing Gear & Accessories Offerings

The Aeronautical Accessories brand is one of the largest providers of skid shoes, skid tubes, crosstubes, steps and related accessories in the industry. Compatibility with factory-installed parts means you get the quality and fit that you demand.



Carbide Technology Skid Shoes

Reworking your standard skid shoes through carbide technology enables longer lasting carbide skid shoes. Carbide technology provides a much higher degree of protection for skid shoes to reduce wear and operating costs. The following lists of skid shoes are available with carbide. These are available on an exchange basis to reduce downtime. (Cores required.)



Airbus Helicopter Models

AS350/H125, AS355
AS350/H125, AS355 (Full Length)
AS350/H125 Optional



BK-117
BO-105
BO-105 (Full Length)
EC120/H120
EC120/H120 (Full Length)
EC130/H130
EC135/H135

Flitestep® Kit – AS350/H125, AS355

The Flitestep® Kit for Airbus AS350/H125 and AS355 helicopters equipped with high skid gear provides a low-cost and lightweight step that eases entry and exit of crew and passengers. In addition to being functional, the Flitestep Kit is aesthetically pleasing and easily installed. The kit includes an extension that allows the non-slip step to be mounted at a height of approximately 18 inches from the forward end of the skid tube to the forward crosstube. The Flitestep Kit is compatible with Aerazur and Air Cruiser floats.

Cargo Baskets & Steps – AS350/H125, AS355



A broad range of cargo baskets, steps and accessories for Airbus AS350/H125 and AS355 helicopters are available. These cargo baskets and steps are manufactured by Aero Design, known for producing quality heli cargo baskets for utility, forestry, tourism and mineral exploration applications. For more information regarding size, load capacity, and additional product approvals, contact your Aeronautical Accessories brand sales representative.

Baskets	Short 56"	Medium 75"	Long 92"	X-Long 96.25"
Cargo Basket Low Position	x	x	x	
Cargo Basket High Position	x	x	x	
Cargo Basket Cheek Pod Compatible	x	x	x	
Ski Basket Low Position				x
Ski Basket High Position				x
Ski Basket Cheek Pod Compatible				x
Steps	Short	Long	Full	
Dart Step Conversion	x	x		
Cabin Step	x	x	x	
Cabin Step w/Commuter Stairs (L or R)	x	x	x	
Maintenance Step Peg				
Maintenance Step Quick Release				
Commuter Step Fixed				
Commuter Step Quick Release				

Aero Design Bicycle Rack – AS350/H125, AS355



The Aero Design Bicycle Rack for the Airbus AS350 and AS355 (H125) enables the transport of 3 bikes per side. This will allow operators to carry a full load of bikes (up to 6 total), full load of passengers and gear on the same flight while providing the ability to swap between basket and bike rack in mere seconds. The rack will accept up to a 4" wide tire on a short frame bike with 26" tire to the current longest frame bike with a 29" tire and no modifications to the rack. Mounts are not included with the bike racks, but are included with basket.

Airglas Helicopter Skis – AS350/H125, AS355



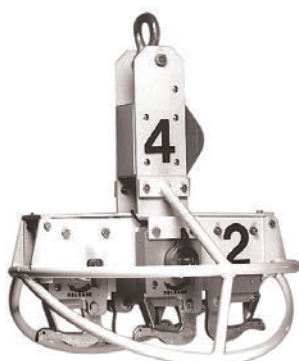
Airglas aircraft landing skis are designed for fixed wing, helicopter, and military aircraft. The designs are used in a variety of rotorcraft makes and models in over 30 different countries.

Safety & Mission Offerings

Improving the performance and reliability of your helicopter goes beyond just replacing parts and accessories. It is also about moving to the next level and adding specialized enhancements to better accomplish your mission. Solutions are developed as a direct response to challenges voiced by customers.



Carrousel Multi-Hook External Load System



The Carrousel Multi-Hook External Load System enables the helicopter operator to transport multiple loads and provides the capability to release or pick up different loads at separate locations. The Carrousel, which utilizes a self-latching load beam feature, is available in both 9-Hook and 4-Hook models. The aluminum alloy frames are equipped with reinforced legs to protect the cargo hook assemblies. The Carrousel accepts 600 lb. or 2,000 lb. cargo hooks. Electrical hand controllers and firing mechanisms provide reliable and trouble-free selective load release capability.

Description

9 Hook Carrousel
Includes Carrousel Frame and Selective Dial Control for Release of 9 Loads

4 Hook Carrousel
Includes Carrousel Frame and Selective Dial Control for Release of 4 Loads

Cargo Hook, Self-Latching



The Cargo Hook is designed to include both electrical and mechanical release functions and utilizes a self-latching load beam feature. All Cargo Hooks can be used in conjunction with 9-Hook or 4-Hook Carrousel External Load Systems to provide a complete system for helicopter external load operations. The Hook is of rugged construction to provide safety and reliability. It is available in 600 lb. and 2,000 lb. capacity versions to fit your specific lift requirement. Cargo Hooks are shipped with electrical leads ready for immediate installation.

The Cargo Hook Guard is also available to prevent damage to the Cargo Hook Assembly.

Description	12 Volt	24 Volt
2000 lb.		x
600 lb.	x	x
Cargo Hook Guard		

WSPS™ – Wire Strike Protection System™



The Magellan Wire Strike Protection System™ or WSPS™ provides a measure of protection from inadvertent wire strikes.

Description

Airbus AS350/H125
Airbus AS350/H125, AS355 Windshield Wiper Deflector Kit
Airbus BK-117

Avionics Console – AS350/H125



The Avionics Console for the Airbus AS350/H125 helicopter replaces the standard Airbus avionics panel and all standard fuses and switches, offering the operator superior reliability with Mil-Spec toggle switches and circuit breakers. With easy maintenance in mind, this console was designed to be removed for carrying out maintenance work. Increased space for aircraft radios coupled with a backlit panel make this console both attractive and functional. The unit comes pre-assembled and pre-wired with all options.

Shoulder Harness

Passenger Shoulder Harness Kit

New dual harness restraint systems are included and are easily installed in the upper aft panel in the following Airbus Helicopter models: Airbus AS350/H125, AS355.

Crew and Passenger Shoulder Harness Components

Operating in the corporate and general aviation markets, ABI TSO-certified restraints are on many helicopter platforms in operation today. ABI restraints are designed to meet and exceed the most demanding certification challenges, including any FAA special conditions requirements.



EC135/H135 Crew Belt



EC145/H145
Crew & Passenger Belt (Assy)



EC225/H225 Crew Belt



AS350/H125, EC130 Crew &
Passenger 4-Point Belt (Assy)

Lighting & Vision

Steerable lights enable 360 degrees of scanner rotation and deliver incredible candlepower. Our Nightscanner™ offerings of lights offer maximum visibility from preflight to landing. Explore the full range of lighting solutions and see how improved vision and cameras can help increase the capabilities of your Airbus helicopter.



Nightscanner and LED Super Nightscanner lighting-AS350/H125, BO-105



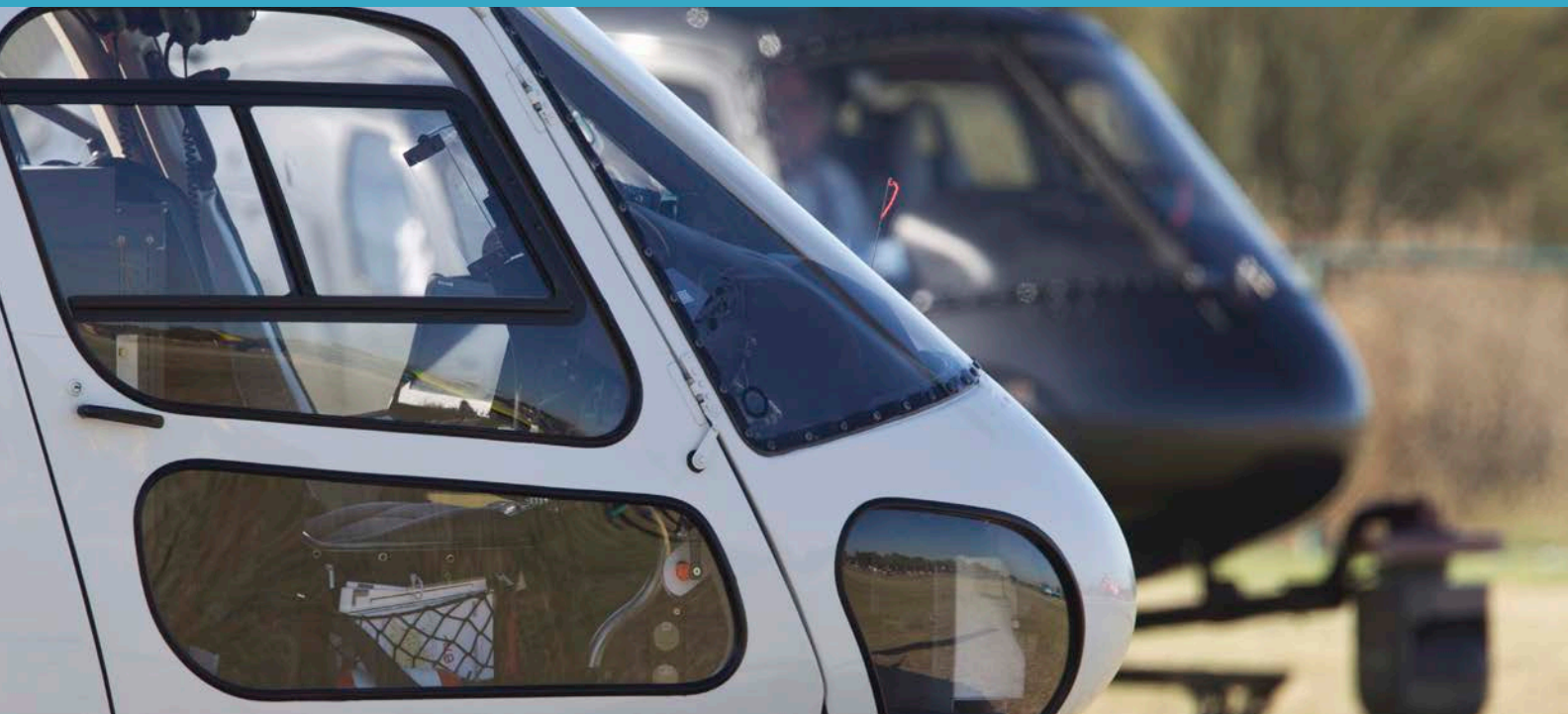
The Nightscanner is a powerful, totally controllable light offering the pilot 400,000 candlepower illumination at 450 watts. The HID Nightscanner is compact, up to 25% brighter (500,000 candlepower), bulbs last 40–80 times longer, and are powered at a fraction of the normal amps required for traditional lighting accessories. The HID Nightscanner Plus increases candlepower to 700,000. The LED Super Nightscanner Landing Light has a rated service life in excess of 50,000 hours, and maintains over 600,000 candela output over its entire service life.

Comparison Table	Nightscanner	HID Nightscanner	HID Nightscanner Plus	LED Super Nightscanner
Candlepower	400K	500K	700K	>600K
Lamp Life (hours)	25	2000	1000	50,000
Amps	18	4	4.5	2.8
Beam Width (degrees)	13 x 14	9 x 9	9 x 9	9 x 9

HurleyIR Falcon Spectral Series II Aerial Gimbal



The Falcon Spectral II aerial gimbal by HurleyIR® was designed to fill a need customers have been requesting for years – a rugged, high-technology security camera with a low price range. The Falcon Spectral II fully gyro-stabilized high-definition thermal and visual aerial gimbal provides the means to put more eyes in the sky for less money. The system is the most rugged aerial gimbal available on the market.



Door Accessories

Automatic Door Openers open cockpit, cabin, and baggage doors automatically when the door latches are released.



Automatic Door Openers



The sturdy gas cylinders are equipped with an exclusive feature that controls the rate of opening and prevents doors from traveling past normal open positions. The door openers help prevent damage to doors and airframe from rotor wash or sudden wind gusts and the Baggage Door Opener holds the baggage door open to facilitate loading and unloading of luggage or cargo.

Gas Cylinder Assembly – Crew Door
AS355E, EC120/H120, AS350B, B1, B2, B3, BA, D, F, F1, F2, N

Gas Cylinder Assembly – Baggage Door
EC120/H120

Ground Support

When it comes to ground handling equipment, you can select from some of the most cost-effective mechanical models designed with operator and aircraft protection in mind.



Helicopter Towbars



Brackett Aircraft's towing systems are designed for one-man operation and are simple to use. They avoid interfering with equipment mounted under the helicopter and can be installed in three to five minutes. The caster wheel assembly can be used separately from the Towbar if desired. The Towbar can also be attached to most towing vehicles.

Description	Ball Hitch	Ring Hitch
AS350/H125 Rear Towbar	x	x
AS350/H125, AS355, BK-117, BO-105 Towbar	x	x
Towbar w/Skid Tubes 2"-3" Diameter	x	x
Towbar w/Skid Tubes 2"-3" Diameter w/Pressure Pads	x	x

Ground Handling Wheels



Ground Handling Wheels are designed to make the repositioning of grounded aircraft a much easier task. The dual wheels reduce twisting and strain on the skid tubes, as well as providing equal pressure on both sides of the skid tube when raising and lowering the helicopter. Ground Handling Wheels are available in Hydraulic and Mechanical models for a wide variety of aircraft and are also available as lightweight, carry along wheels for emergency situations when away from home base.

AS350/H125, EC120/H120 Mechanical (Set)
AS350/H125, AS355 Hydraulic (Set)
BO-105 Hydraulic (Set)
BK-117, H145 Hydraulic (Set)
EC130/H130 Hydraulic (Set)



RoLin Windshield Buddy™ Protective Covers – AS350/H125, AS355, BK-117



RoLin Industries' Windshield Buddy products protect rotorcraft against environmental elements such as rain and the sun's heat and ray damage, as well as corrosion. The Portable Hangars, Windscreens, and Component Covers also provide helicopter protection from sand and stones as well as ice and snow that can become airborne when in close proximity to other aircraft that are taking off or landing. Storage containers included with select covers. Certain covers may require mounts.

Description	Color
Windshield Cover	Blue
Portable Hangar	White, Tan, Royal Blue, Desert Camouflage, Woodland Camouflage, Digital Camouflage, Green, Blue

Fuel & Filters

Cost-effective fuel-related solutions let you fly higher, heavier and faster with a cleaner engine.

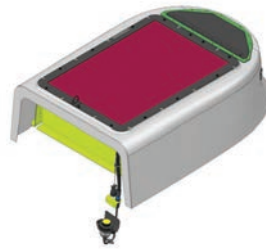
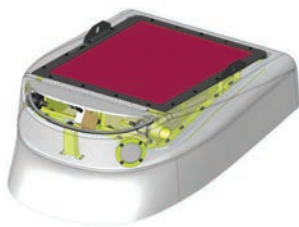
Working with industry-leading suppliers, we provide the latest innovations in fuel filters and accessories under the Aeronautical Accessories brand.



Fuel Cap Lanyard Kit – AS350/H125

Fuel Cap Lanyards help ensure your fuel cap is where it needs to be at all times.

Inlet Barrier Filtration Kits/Filters



The Inlet Barrier Filtration Kit – a quality system proven in desert combat – removes more than 99 percent of airborne dust, sand, and dirt, even at the micron level. Filtration kits are easy to maintain and replace and are more cost-effective than replacing a single damaged engine component.

Airbus AS350/H125 (excludes Airbus AS350 B3 w/dual hydraulics)		Airbus EC130/H130 and AS350/H125 B3 w/dual hydraulics	
Inlet Barrier Filter Kit		T2/B3E Dual Hyd IBF Kit w/cover	
Filter Assembly, Spare		Filter Assembly, Spare	
IBF Kit and Spare Cover		Filter Assembly, Spare DRY	
LTS 101 H/W Kit		IBF Kit Cover, Spare	
Filter Assembly – Hardware Upgrade (DZUS to WES)		EAPS/Sand Filter Cover, Option	
FDC Louver		EC130/H130 Drill Template, Spare	



Aeronautical
ACCESSORIES™
A Bell Helicopter Brand

www.aero-access.com | 1.800.251.7094 | sales@aero-access.com | techsupport@aero-access.com

Aeronautical Accessories is a Bell Helicopter brand. All registered trademarks are the property of their respective owners. The information herein is general in nature and may vary with conditions. Individuals using this information must exercise their independent judgment in evaluating product selection and determining product appropriateness for their particular purpose and requirements. For performance data and operating limitations for any specific mission, reference must be made to all approved manuals. Bell Helicopter Textron Inc. makes no representations or warranties, either expressed or implied, including without limitation any warranties of merchantability or fitness for a particular purpose with respect to the information set forth herein or the product(s) and service(s) to which the information refers. Accordingly, Bell Helicopter Textron Inc. will not be responsible for damages (of any kind or nature, including incidental, direct, indirect, or consequential damages) resulting from the use of or reliance on this information. Bell Helicopter Textron Inc. reserves the right to change product designs and specifications without notice. © 2017 Bell Helicopter Textron Inc. AA_CATALOG-170901-R00 EN